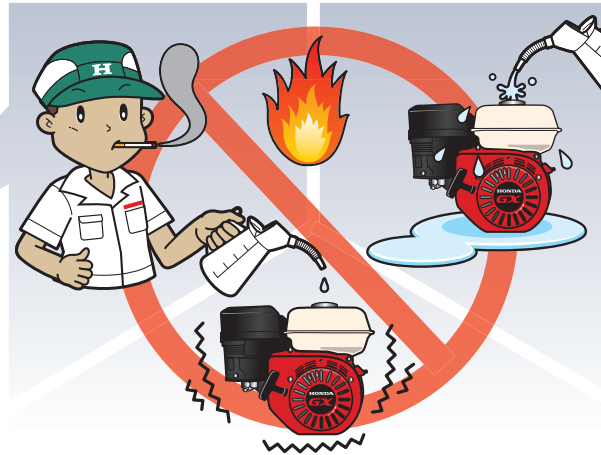




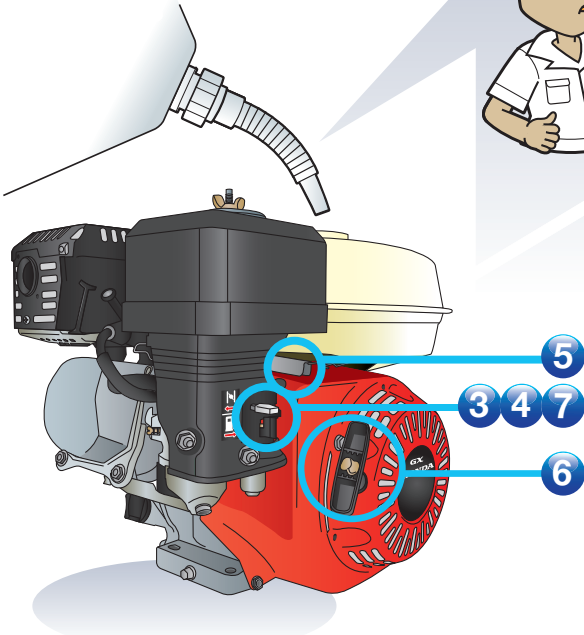
* Read and understand the Owner's Manual before operating the engine.



Safety! be careful!

✓ Safety! Be careful!

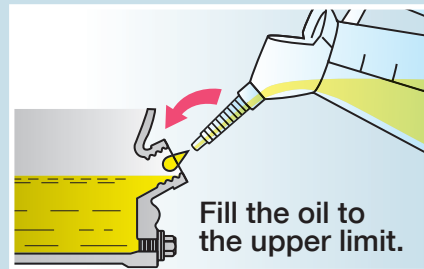
✓ Do not use inside house



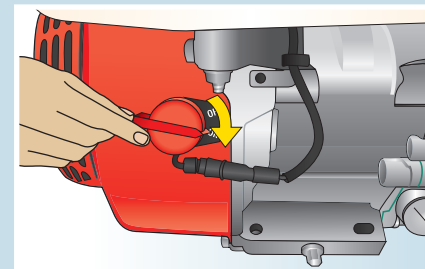
▶ How to start

▶ How to stop 5 → 2

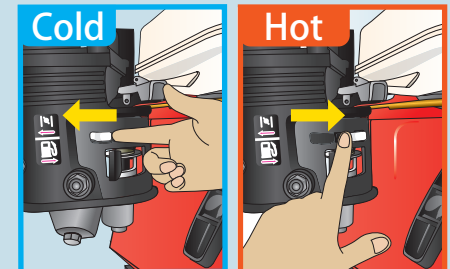
1 Check engine oil



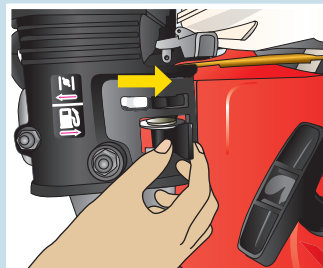
2 Switch ON



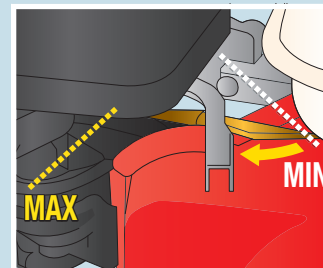
3 Choke ON/OFF



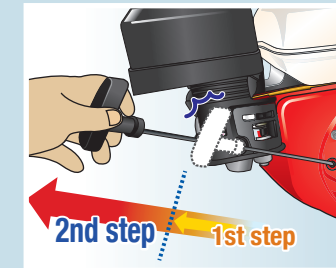
4 Fuel cock ON



5 Throttle lever



6 Start



7 (Choke off)

